



IDS i20

Efficient automation for chemiluminescence immunoassays

Reliable ChLIA results with minimal hands-on time

The IDS i20 is a true random-access automation solution for simultaneous processing chemiluminescence immunoassays (ChLIA) from six diagnostic areas (endocrinology, allergy, autoimmune diseases, infectious diseases, Alzheimer's disease and therapeutic drug monitoring).

Samples can be loaded continuously – even by connecting to a lab track – which means that each patient sample can be processed efficiently and with minimal hands-on time. Together with the priority processing of emergency samples (STAT samples), laboratories with dynamic sample throughputs and sample requirements are provided with the greatest possible flexibility in routine work. Another plus is the intuitive software interface, developed according to 'Human Factors and Usability Standards', which enables quick and easy operation.

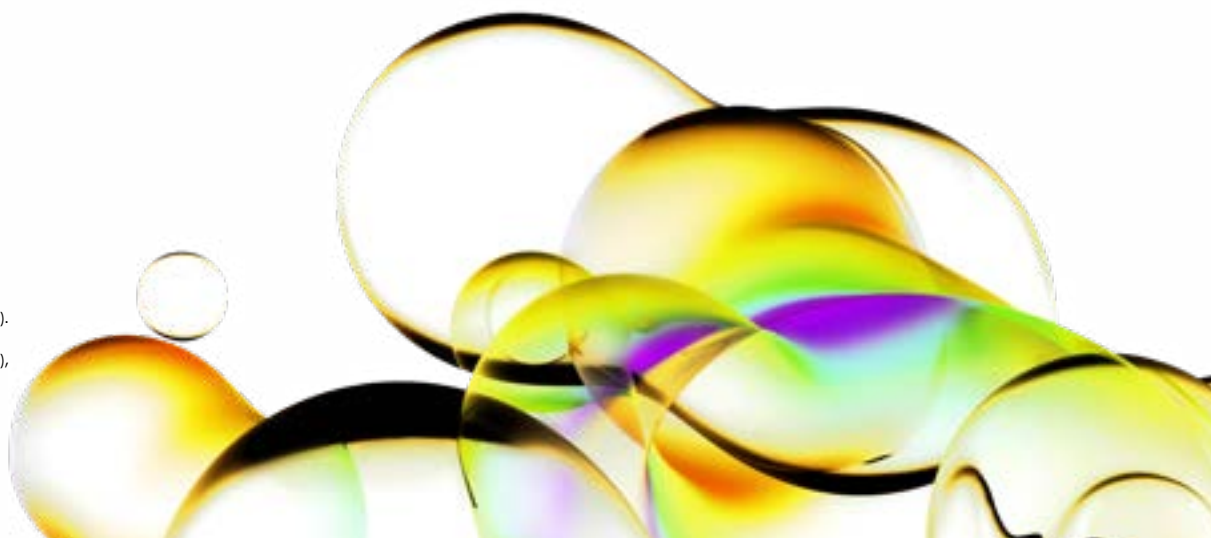
The IDS i20 follows the well-established random-access devices IDS-i10 and IDS-iSYS and has been developed based on 50 years of experience in medical devices – always with a focus on usability and reliability.

Features

- Simultaneous processing of 20 analytes from six diagnostic areas on one device
- Reliable results after just 25 minutes*
- Up to 650 tests walk-away time*
- High throughput of up to 140 tests / hour*
- Over 300 days MTBF expected

* Assay dependent

Product manufactured by Immunodiagnostic Systems Ltd (IDS). IDS i20 is a trademark of Immunodiagnostic Systems Ltd (IDS), available to order from your local Euroimmun contact.



System	
Dimensions	
Size	150 cm x 70 cm x 160 cm (W x D x H) 59 inch x 27.6 inch x 63 inch (W x D x H)
Clearance	30 cm/ 12 inch on the right
Weight	245 kg; 540 lb
Maximum basis weight	254 kg/m ² ; 540 lb/ft ²
Power supply (excluding computer)	
Voltage	100–240 V
Frequency	50–60 Hz
Maximum power consumption	750 VA (2389 BTU/h or 167 cal/s)
Environment	
Sound level	< 66 dB
Surrounding temperature	Must be between 18 °C and 30 °C
Relative humidity	Must be between 20% and 80% (non-condensing at 25 °C)
Detection	
Luminometer	
Photomultiplier	300–500 nm
Linearity	R ² > 0.95 up to 625k RLU
Spectrophotometer	
LED Technology	Yes
13 wavelength interferential filters	340, 405, 450, 500, 540, 550, 580, 600, 620, 650, 700, 750 and 880 nm
Linearity	Up to 3 Abs
Optic path of cuvettes	0.8 cm
Graphic user interface and computer	
GUI	
<ul style="list-style-type: none"> Modern look and feel One screen run monitoring Touch screen friendly User role management GDPR compliant Cybersecurity UL 2900-1 compliant Microsoft BI reporting Full traceability Reagent stability management Bidirectional connection to Laboratory Information System (LIS) 	
Operating system	
Minimum configuration required: <ul style="list-style-type: none"> Operating system Windows 10 or 11 Intel core i7, 5.4 GHz RAM 16 GB Hard Drive 500 GB 2 RJ45 ports for ethernet connections 7 USB ports 1 HDMI or DisplayPort Keyboard and mouse 19 to 25 inches touch screen 1920 x 1080 px screen resolution VESA1 compatible screen 	

Workflow	
Random access and batch processing	Yes
Time to first results	< 25 minutes (assay dependent)
Tests/hour	Up to 140 (assay dependent)
Samples / reagents management	
Samples	
<ul style="list-style-type: none"> 90 positions for samples, calibrators and controls (9 racks with 10 positions) 60 positions for samples, calibrators and controls (6 racks with 10 positions) with track connection Default sample tube library: Primary tubes: 5 ml (13 x 75 mm), 7 ml (13 x 100 mm), 10 ml (16 x 75 mm) Secondary tube: 5 ml (13 x 75 mm) Micro cups: 500 µl, 2 ml Other sample containers can be defined by the user Continuous loading, batch mode and STAT function Automatic reading of barcoded sample tubes (positive identification) Barcode types: Code 2/5, EAN/UPC, Code 39, Code 128 and Codabar On-board dilution and automatic pretreatment 	
Reagent compartment	
<ul style="list-style-type: none"> Up to 20 reagent cartridges (Immunology) Up to 80 reagent vials (Spectrophotometry) Up to 171 specific antigens + 1 total IgE cartridge (allergy) Management of multiple same reagent vials Automatic reading of barcoded reagent (positive identification) Onboard storage: 12–15 °C 	
Sample handling	
<ul style="list-style-type: none"> Capacitance-based liquid level detection Clot detection (by pressure transducer) Systematic high-pressure rinsing of the needle Teflon-coated needle Preheating of reagents and samples Sample volumes: from 4 µl to 300 µl (assay dependent) 	
Carousel	
<ul style="list-style-type: none"> Temperature regulated at 37 °C ± 0.5 °C 72 positions for disposable cuvettes 4 independent immunowashers 	
Cuvette loader	
<ul style="list-style-type: none"> Preheated loader Refill with cubes of 960 disposable cuvettes Up to 1120 cuvettes on board 	
Waste collection	
<ul style="list-style-type: none"> 10 litres container for liquid waste Solid waste (cuvettes) using disposable waste bags (up to 650 cuvettes) 	

Ordering information	
Product name	Product code
IDS i20	IS-910400

Find out more at
www.euroimmun.com
 or contact us directly at
www.euroimmun.com/contact

